

NEW  
458









NEW  
458





4 TRENDSETTERS



NEW  
458

*Hanse*   
BREAKING RULES . SETTING TRENDS

458  
NEW





A teal and white Hanse 458 yacht is shown from a low angle, sailing on a body of water with a textured, rippling surface. The yacht's hull is teal, and the deck is white with wooden accents. The background is a vast expanse of blue water.

FOR

# TRENDS SETTERS

Innovativer. Exklusiver. Komfortabler: Die neue Hanse 458 ist die Yacht für alle, die Trends nicht folgen, sondern selber Trendsetter sind. Mit einem zukunftsweisenden Design. Mit der aufregendsten Performance ihrer Klasse. Einem exquisiten Interieur. Und einer außergewöhnlichen Vielfalt an Individualisierungsmöglichkeiten. Die Hanse 458 wird höchsten Ansprüchen an Stil, Zeitgeist und Lebensqualität gerecht. Lassen Sie sich begeistern von exzellent durchdachtem Luxus auf 45 Fuß.

---

More innovative, more exclusive and more comfortable than ever. The new Hanse 458 is the yacht for all of those who set trends . With a pioneering design and the most thrilling performance in its class. With an exquisite interior and an exceptionally diverse range of customisation options. The Hanse 458 caters to the highest demands on contemporary style and quality of life. Let yourself be amazed by excellence across 45 feet.



Das HANSE Easy-Sailing-Concept ist legendär. Wir haben die integrierte Selbstwendefock konzipiert und sämtliche Leinen zum Doppel-Steuerstand umgelenkt, so dass Sie diese Yacht völlig entspannt auch ganz alleine segeln können. Manöver wie Reffen, Wenden und Segelsetzen erledigen Sie über zwei Winschen bequem und schnell von Ihrem Steuerstand aus. Das Deck ist kompromisslos frei von Leinen und Beschlägen. Damit genießen Sie freie Sicht und haben im Hafen viel Platz zum Entspannen. So geht Segeln heute!

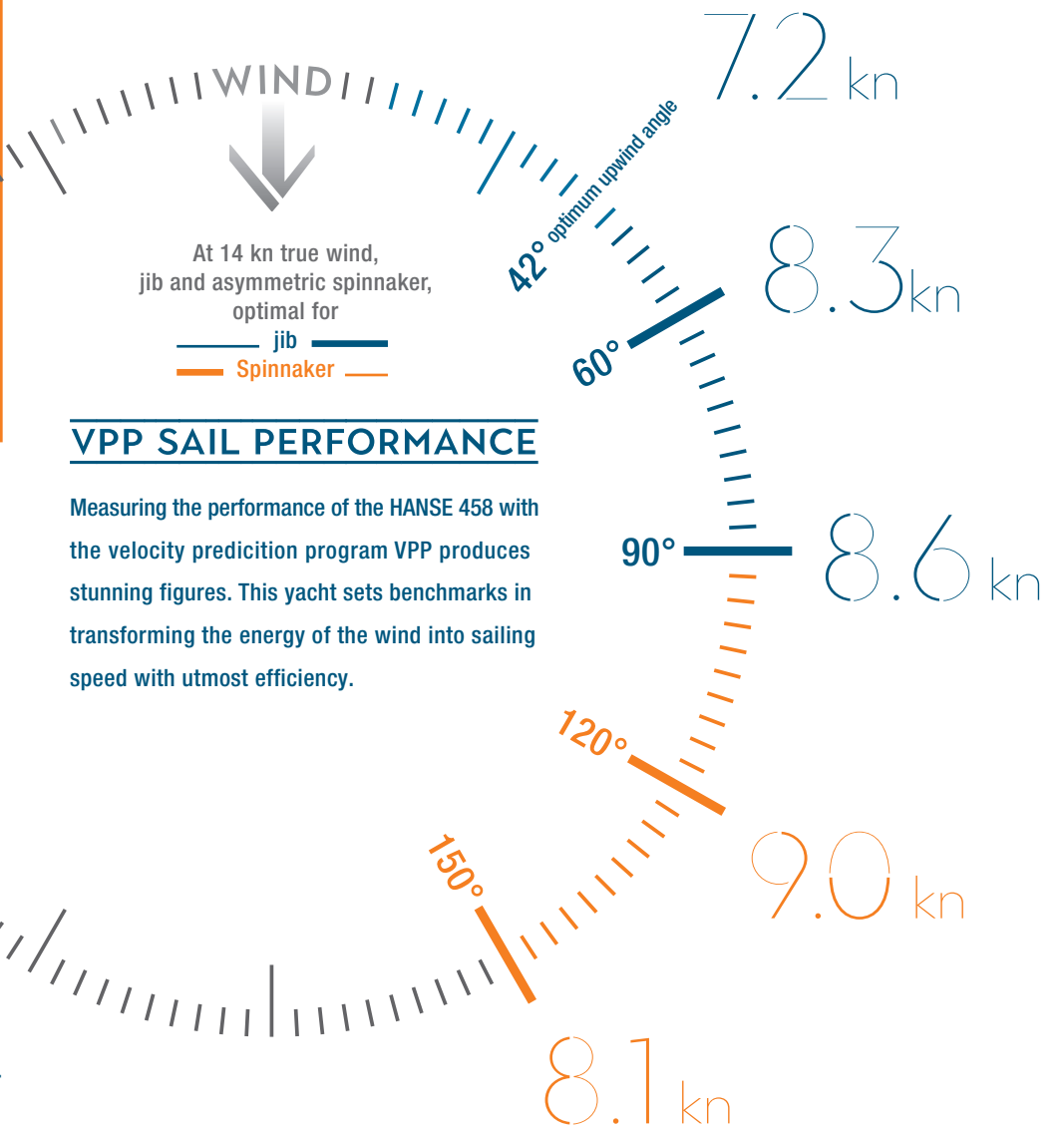
---

The Hanse Easy Sailing concept is legendary. We are the designers of the integrated self-tacking jib, with all the ropes guided directly to the two-wheel helm, enabling you to sail this yacht with the greatest of ease all on your own. Manoeuvres like reefing, tacking and setting the sails can all be done comfortably and quickly using just two winches at the helm. The deck is completely free of all ropes and fittings – so you can enjoy an uncompromising view and have lots of space for relaxing. Modern sailing at its best!

# EASY SAILING







Gebaut, um auf See zu begeistern. Die markanten schnellen Rumpflinien, das hohe Rigg und der kraftvolle Segelplan stammen aus der Feder von judel/vrolijk & co, einem der besten und erfahrensten Yacht-Konstrukteure der Welt. Das Zusammenspiel aus revierangepasstem Lateralplan und vorbalanciertem Ruderblatt ist ein Garant für überragende Schnelligkeit, Stabilität und Sicherheit.

Built to amaze at sea. The distinct hull lines underscoring speed, the high rig and the powerful sailing plan all stem from the feather of judel/vrolijk & co, one of the world's best and most experienced yacht designers. The interplay of a perfectly adapted lateral plan and a pre-balanced rudder blade is your guarantee for fantastic speed, stability and safety.

# FAST CRUISING



Wegweisende Innovationen und intelligente Details, die in einer emotionalen Formensprache Ausdruck finden, machen aus einer Yacht eine hochmoderne Hanse Yacht. Jedes Detail setzt dabei ein klares Design-Statement. In der Gesamtheit entsteht daraus die einzigartige, hansetypische Wohlfühlatmosphäre, die Sie, einmal erlebt, nie wieder vermissen möchten.

---

Pioneering innovations and intelligent details are expressed in an emotional design language – the creating this very unique Hanse yacht. Each detail makes a clear design statement. When experienced together, they create a unique and typical Hanse atmosphere of well-being, one which you will never want to do without.



# INNOVATIVE DESIGN



INNOVATIVE DESIGN





# EXTERIOR

HIGHLIGHTS

1 Badeplattform mit Teak 2 Steuermannssitze mit integriertem BBQ und Waschbecken 3 Doppelsteueranlage  
4 Ergonomische Plotterpods 5 Glas-Skylights seitlich vom Niedergang 6 Sechs Rumpffenster 7 Dreizehn  
zu öffnende Decksluken 8 Hanse-Selbstwendefock 9 Skylights im Vorschiff

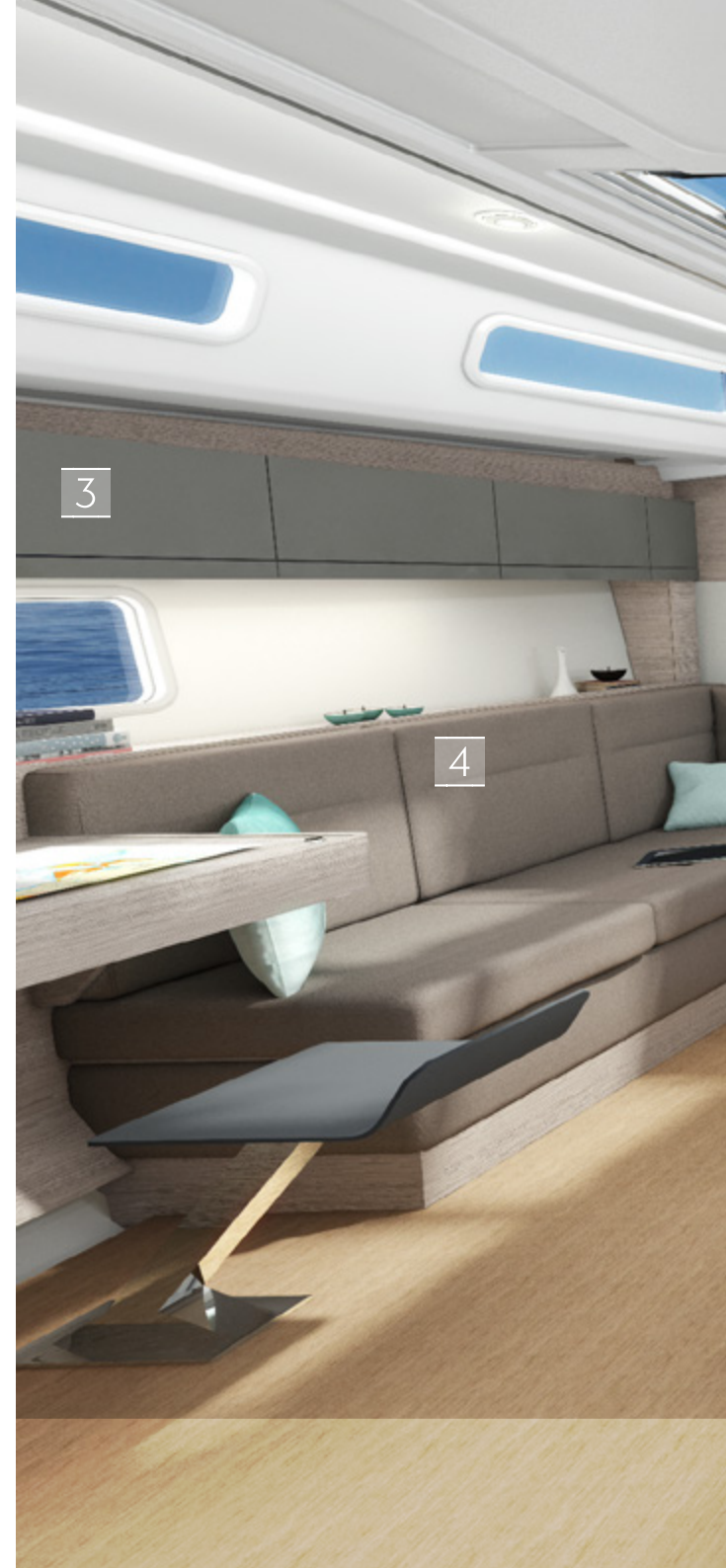
1 Bathing platform with teak 2 Helmsmanseats with integrated BBQ and washbasin 3 Twin wheels 4 Ergonomic  
plotterpods 5 Glass skylights beside companionway 6 Six hull windows 7 Thirteen openable deck hatches  
8 Hanse-self tacking jib 9 Skylights on fore deck



# INTERIOR HIGHLIGHTS

**1** Luxuriöse Eignerkabine mit Kingsize-Inselbett, herrlich großen Skylights und viel Stauraum **2** Exklusive neue Hölzer und Dekore  
**3** Kolorierte Oberschränke in trendigem Pearl Grey oder Dove Grey **4** Stilvoller Salon mit Loungesofas und elegantem, absenkbarem Salontisch **5** Hochwertige Wandverkleidung in Holzoptik **6** Moderne, vollausgestattete L-Pantry mit intelligentem, patentierten Kühlschrank, der von oben und von vorne zu öffnen ist

**1** Luxurious owner's cabin with king-size island bed, wonderful large skylights and enormous storage space **2** Exclusive new woods and décors **3** Coloured upper cupboards in a trendy Pearl Grey or Dove Grey tone **4** Stylish salon with elegant lounge sofas and lowerable table **5** High-quality wall panelling in wood-look **6** Modern, fully equipped L-shaped pantry features an intelligent, patented fridge, which is openable from above and in the front





5

6



Setzen Sie Trends und machen Sie Ihre Hanse zu Ihrem ganz persönlichen Unikat: Mit Ihrer Lieblingsrumpffarbe wird Ihre Yacht bereits im Hafen zum aufregenden Blickfang; und mit Ihrer technischen Wunschausstattung wird sie zum exzellenten Begleiter in allen Revieren. Auch unter Deck können Sie Ihre Hanse 458 genau nach Ihren Wünschen gestalten. Wählen Sie das Kabinenlayout, Farben, Hölzer, Stoffe und Extraausstattungen – jedes Detail ist Ausdruck Ihres persönlichen Anspruchs.

Set trends and make your Hanse your very own by giving it a personal touch. Your favourite hull colour ensures your yacht is an exciting eye-catcher in any harbour. And with your desired technical equipment, it also becomes the ultimate companion in all waters. Below deck, too, you can design your Hanse 458 to your heart's desire. Choose the cabin layout, colours, woods, fabrics and extras – each detail is an expression of your personal sophistication.



# INDIVIDUAL

CUSTOMIZATION

 458



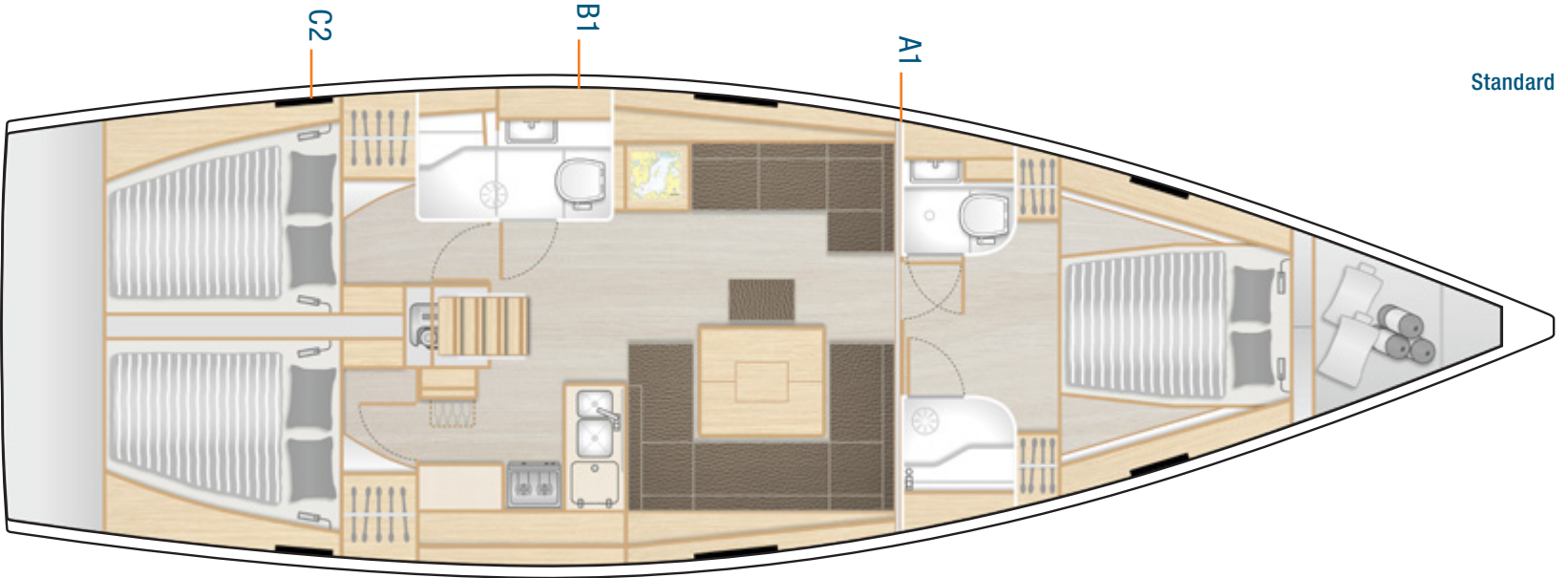


Optimal für jede Crew: Je nachdem, ob Sie entspanntes Familiensegeln oder sportliches Segeln mit Freunden vorziehen, Sie können die Kabinenaufteilung Ihrer Hanse 458 bestimmen. Für Segeln mit der Familie wählen Sie die luxuriöse Eignerkabine im Vorschiff und zwei Achterkabinen. Für mehr Gäste an Bord, lässt sich das Vorschiff mit zwei gemütlichen Doppelkojen ausstatten.

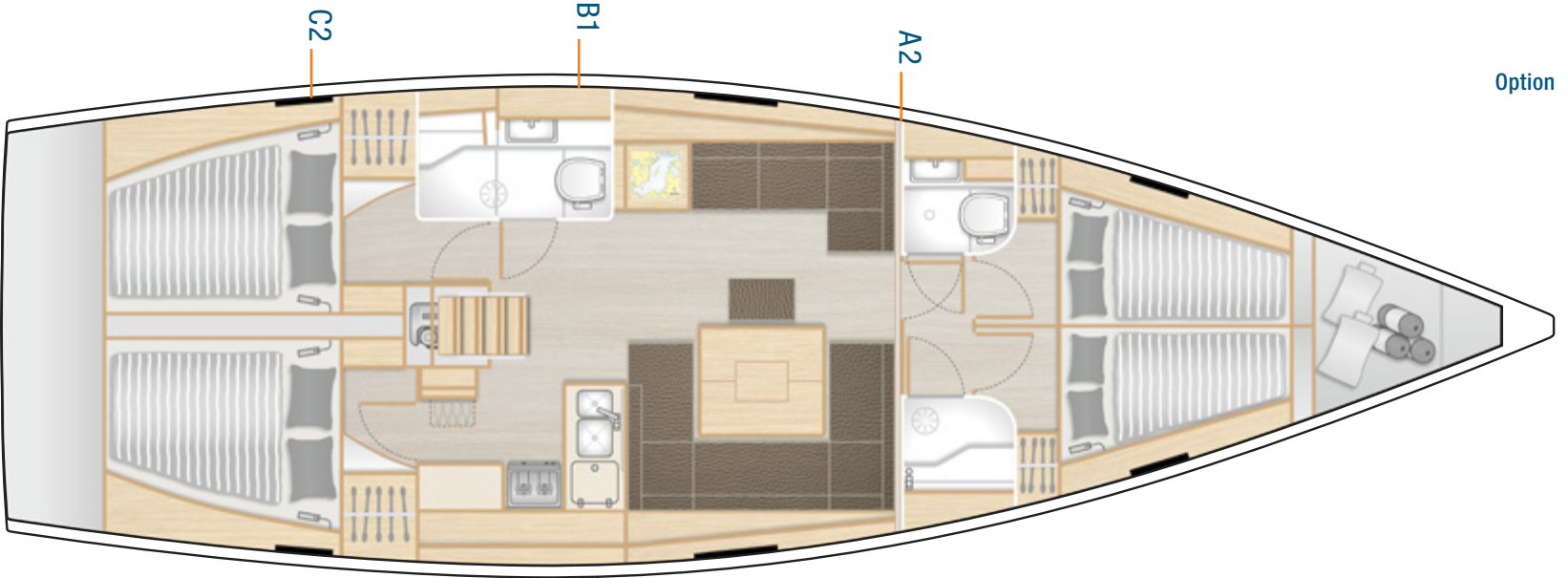
Optimal for any crew: Whether you enjoy relaxed sailing with family or sporty sailing with friends, you can choose the cabin layout of your Hanse 458 to meet your needs. For sailing with the family, opt for the luxurious owner's cabin in the bow and two aft cabins. For more guests on board, the bow can be outfitted with two cosy double-bed cabins.



INDIVIDUAL **CABIN** CONCEPT



Standard



Option

Create your own

# STYLE LIFE

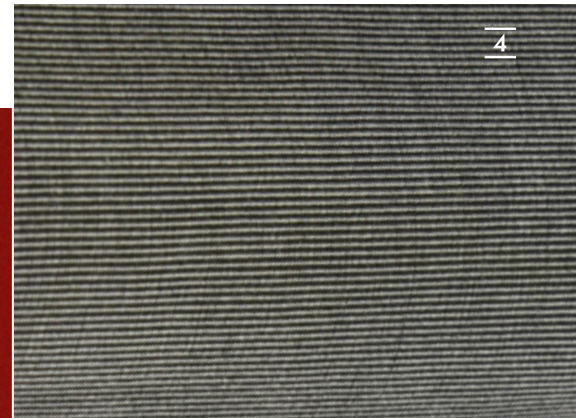
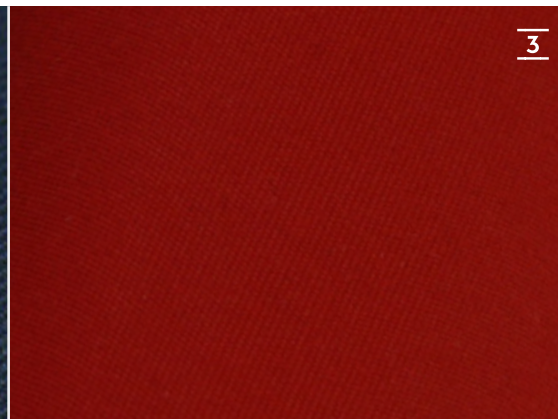
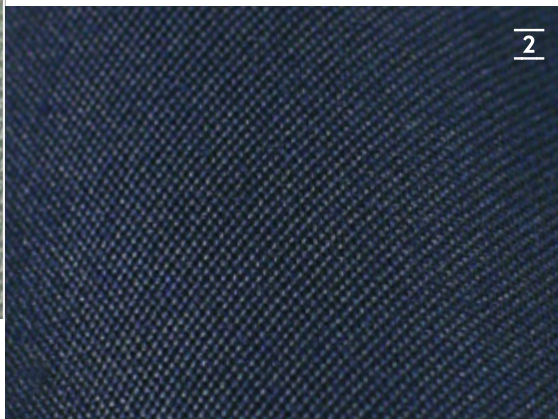
Modern, innovativ und sportlich: Verleihen Sie dem Charakter Ihrer Hanse Ausdruck. Neben verschiedenen trendigen Rumpffarben stehen Ihnen auch für das Deck verschiedene Ausführungen zur Verfügung. Mit einer Auswahl edler Stoffe, für beispielsweise Polster, Lazy Bag oder Sprayhood, setzen Sie individuelle Akzente.

Modern, innovative and sporty: Let the character of your Hanse shine through. In addition to different trendy hull colours, the deck is available in several variants. With a selection of elegant fabrics, for instance for upholstery, the Lazy Bag or sprayhood, you can express your individual personality.



## FABRICS EXTERIOR

more options available



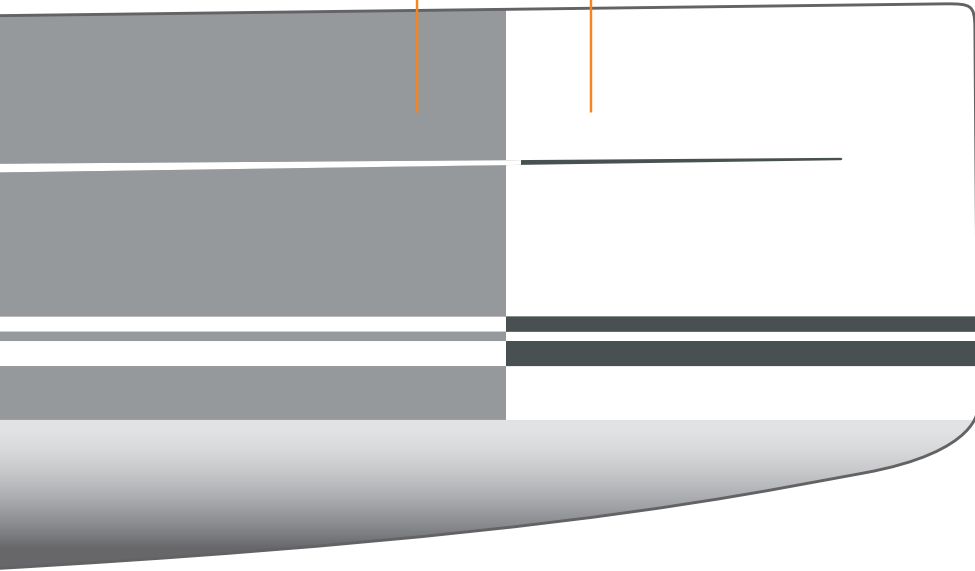
Lazy Bag/Bimini/Sprayhood/Cover/Canopy **1** Light Grey **2** Dark Blue  
Cushions for Cockpit, Sun Bed, Helmsman Seats **3** Red **4** Dark Grey



## GELCOAT

Grey  
Signal White

Signal White  
Dark Grey



## TEAK & SYNTHETIC TEAK



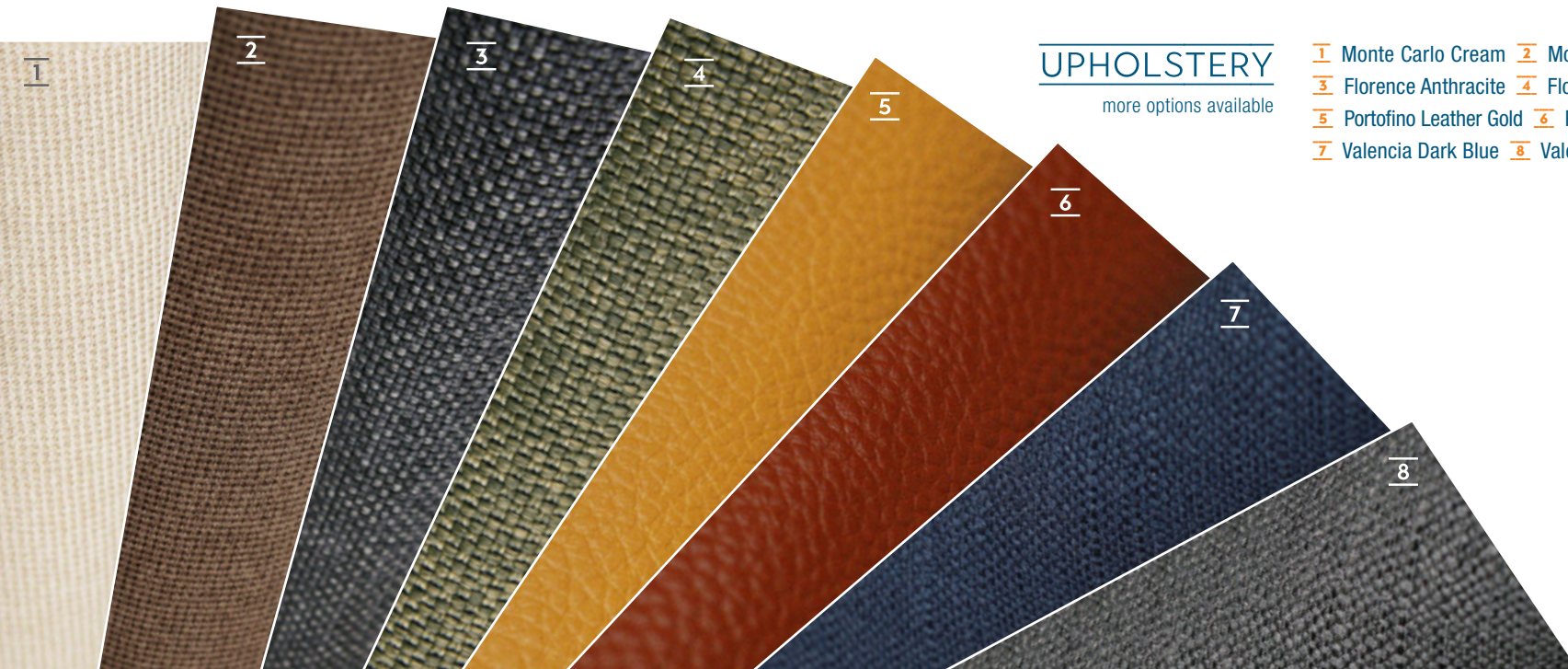
1 Teak · Synthetic Teak: 2 Teak Black 3 Teak Grey 4 Teak White  
5 Scrubbed Black 6 Scrubbed Grey 7 Scrubbed White 8 Weathered Black  
9 Weathered White





Modern, extravagant oder klassisch? Im Hanse Online-Konfigurator auf [hanseyachts.de](https://hanseyachts.de) können Sie Ihre Hanse nach Ihren Vorstellungen konfigurieren und auf Wunsch direkt ein Angebot anfordern.

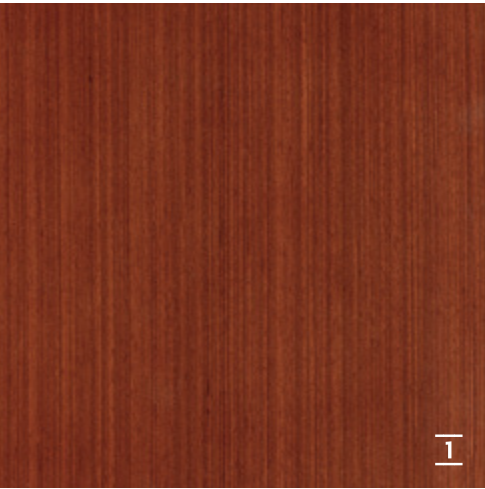
Modern, extravagant or traditional? In the Hanse online configurator at [hanseyachts.de](https://hanseyachts.de), you can create your Hanse to your personal taste and request a quote from a dealer near you.



## UPHOLSTERY

more options available

- 1 Monte Carlo Cream
- 2 Monte Carlo Chocolate
- 3 Florence Anthracite
- 4 Florence Green
- 5 Portofino Leather Gold
- 6 Portofino Leather Red
- 7 Valencia Dark Blue
- 8 Valencia Light Grey



1 Mahogany Style Satin Varnish or High Gloss

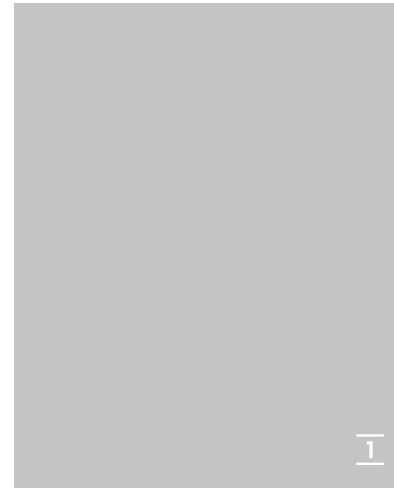
## FURNITURE WOOD

more options available



2 French Oak

## CUPBOARD FRONTS



1 Pearl Grey

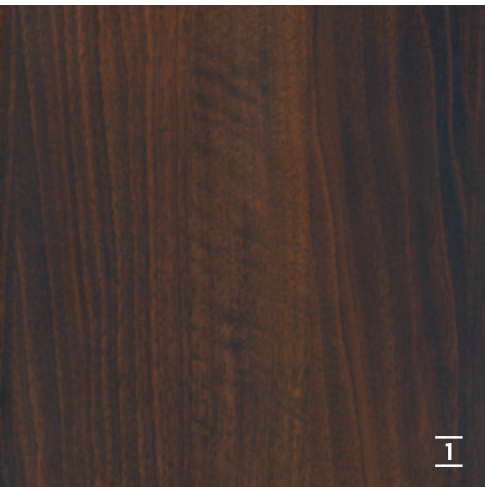


2 Dove Grey



## FLOORING

more options available

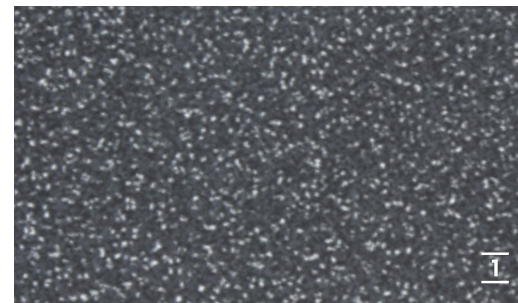


1 Noce Nero

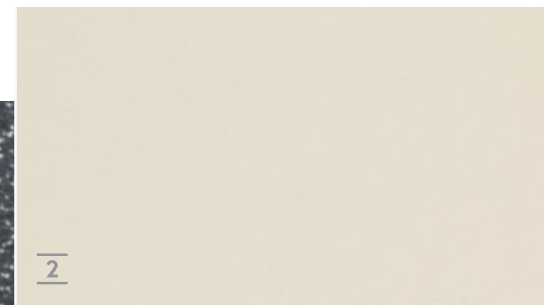


2 Classic Stripes

## WORKTOP GALLEY



1 Black Quartz



2 Seashell White



## COMFORT PACKAGE

Eindrucksvoll souverän und progressiv bis ins kleinste Detail. Mit dem optional erhältlichen Hanse Komfortpaket können Sie diese Stärken noch mehr betonen. Es umfasst Ausstattungen, die genau an die Wünsche und Bedürfnisse von anspruchsvollen Eignern angepasst sind.

Enjoy the impressive character of your yacht even more and revel in its progressive design down to the subtlest detail. With the optional Hanse Comfort Package, you can accentuate your Hanse yacht with a host of extra highlights. The package consists of furnishings and fittings which perfectly cater to your needs and make your every wish a reality.

### PACKAGE CONTENT

1 Courtesy lights in cockpit 2 Courtesy lights at companionway 3 2 vents for coach roof hatches 4 Indirect lights in saloon and cabins 5 LED overhead lights in saloon and master cabin, dimmable 6 SLS - Scenario light system - touch screen controller and dimmer in saloon and master cabin 7 Cockpit cushions 8 Blind set with flyscreens for deck hatches 9 Blinds for hull windows 10 Blinds for side coach roof windows

## CRUISING PACKAGE

Maßgeschneidertes Zubehör. Mit dem ebenso vielfältigen wie vielseitigen Cruising Paket gewinnt Ihre Yacht genau die Funktionalität, die Sie sich wünschen. So stimmen Sie Ihre Hanse bis ins Detail auf Ihr Leben und Ihre individuellen Bedürfnisse ab. Entdecken Sie jetzt die ganze Vielfalt unseres Angebots.

Make your Hanse yacht truly yours with customised accessories. The Cruising Package offers a host of diverse extras and versatile options for you to give your yacht just the performance and highlights you desire. Tailor your Hanse to be in perfect harmony with your life and individual needs, down to the minutest detail. Discover today all that this package provides.

### PACKAGE CONTENT

1 Teak on cockpit bottom 2 Helmsman footrests (free mountable) 3 2 additional cleats, midship, retractable (1 each side) 4 Anchor windlass, electrical, remote control with chain counter 5 Delta-anchor 20 kg, galvanized with 60 m galvanized chain, dia. 10 mm 6 Battery set, capacity: 1x 90 Ah + 2x 160 Ah AGM 7 Shower unit in cockpit, warm-/coldwater 8 Wind indicator 9 Flagpole 10 6 fenders 11 4 mooring lines 12 Add. winch handle 13 HANSE maintenance kit

## HANSE PACKAGES



## NAVIGATION PACKAGE

Um Ihr Segelerlebnis an Bord noch komfortabler zu gestalten, können Sie Ihre Yacht mit dem attraktiven High-Tech Navigationspaket ausstatten. Damit werten Sie nicht nur Ihre Hanse auf, sondern sparen zugleich. Mit den innovativen Kartenplottern und Windmessenrichtungen haben Sie alle Informationen im Blick und sind noch schneller am Ziel.

Experience even more enjoyable sailing by upgrading your yacht with our appealing high-tech Navigation Package. And, at the same time, be at the cutting edge with the most modern advancements. Thanks to the innovative chart plotters and wind measuring device, you have all the data you need at a glance to arrive at your destination even faster.

### PACKAGE CONTENT

1 2 instrument pods (1 per helm station) 2 B&G Triton<sup>2</sup> multifunction displays in cockpit, incl. transducer (wind/depth/speed/temperature) 3 B&G VHF 50 at chart table, incl. wireless remote handset H50 4 B&G Zeus<sup>3</sup> 9" chart plotter, stb 5 B&G Autopilot with Triton<sup>2</sup> control unit and Precision 9 compass 6 VHF preparation with antenna and splitter for FM and AIS



Beam 4.38 | 14'4"



LOA 14.04 m | 46'1"

LOA		14.04 m	46'1"
Hull length		13.55 m	44'5"
LWL		12.20 m	40'0"
Beam		4.38 m	14'4"
Draft			
L-keel medium		2.23 m	7'4"
L-keel shallow		1.82 m	5'12"
Displacement			
L-keel medium	approx.	11.70 t	25,794 lb
L-keel shallow	approx.	12.10 t	26,675 lb
Ballast			
L-keel medium	approx.	3.38 t	7,447 lb
L-keel shallow	approx.	3.74 t	8,245 lb
Engine Diesel			
standard	approx.	57 PS	57 HP
option	approx.	80 PS	80 HP
Fuel tank	approx.	210 l	55 gal
Fresh water	approx.	450 l	119 gal
CE Certificate	A -10 ocean		
Design	judel/vrolijk & co		
Interior	HanseYachts Design		

Mast length above WL	approx.	20.60 m	67'7"
Total sail area	approx.	103.00 m <sup>2</sup>	1,109 sq ft
Main sail			
standard	approx.	60.00 m <sup>2</sup>	646 sq ft
furling	approx.	48.00 m <sup>2</sup>	517 sq ft
Self-tacking jib	approx.	43.00 m <sup>2</sup>	463 sq ft
Crossover	approx.	93.00 m <sup>2</sup>	1,001 sq ft
Gennaker	approx.	160.00 m <sup>2</sup>	1,722 sq ft
Rig			
I		17.80 m	58'5"
J		5.50 m	18'1"
P		17.00 m	55'9"
E		5.95 m	19'6"

All measurements are approximate. Specification and material can be changed without notice. Errors excepted.

## 458 SPECIFICATION

## 4 TRENDSETTERS



This brochure is not contractual. The yachts depicted partly comprise special equipment not included in the standard scope of supply. Illustrations may not correspond with current versions. Subject to alterations in design and equipment without notice and errors excepted. Photos/Rendering: HanseYachts, N. Krauss, Björn Willer | Design: design-hanksen.de & uifson.de | Print: Eggers Druckerei & Verlag GmbH

CIB458/A/0718

# SPECIFICATION



LOA		14.04 m	46' 1"
Hull length		13.55 m	44' 5"
LWL		12.20 m	40' 0"
Beam		4.38 m	14' 4"
Draft			
shallow keel		1.82 m	5' 12"
L-keel, medium		2.23 m	7' 4"

Displacement			
shallow keel	approx.	12.10 t	26,675 lbs
L-keel, medium		11.70 t	25,794 lbs

Engine Diesel			
standard	approx.	57.00 PS	57.00 hp
option	approx.	80.00 PS	80.00 hp

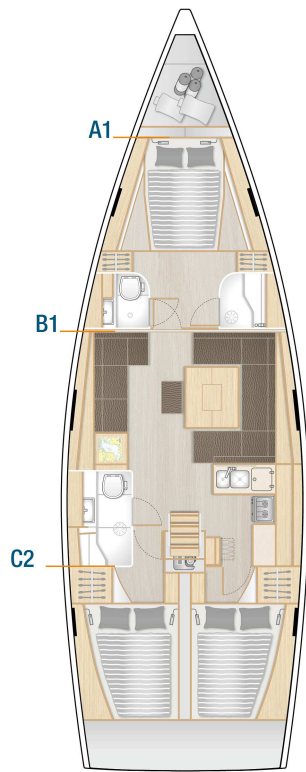
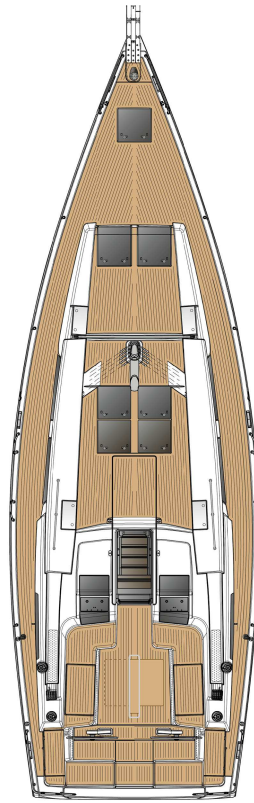
Fuel tank	approx.	210 l	55 gal
Fresh water	approx.	450 l	119 gal

CE Certificate	A-10
Design	judel / vrolijk & co
Interior	HanseYachts Design

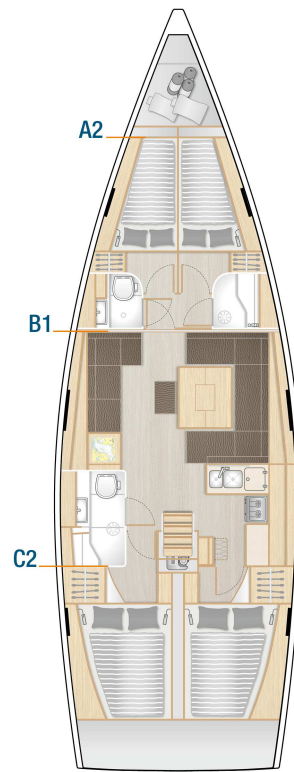
Mast length above WL	approx.	20.60 m	67' 7"
Total sail area	approx.	103.00 m <sup>2</sup>	1,109 sq ft
Main sail			
standard	approx.	60.00 m <sup>2</sup>	646 sq ft
furling	approx.	48.00 m <sup>2</sup>	517 sq ft
Self-tacking jib	approx.	43.00 m <sup>2</sup>	463 sq ft
Crossover	approx.	93.00 m <sup>2</sup>	1,001 sq ft
Gennaker	approx.	160.00 m <sup>2</sup>	1,722 sq ft

# 458

Model year 2019. Valid from 2018.07.01. All measurements/figures are approximate. Errors and omissions excepted. Specification and material can be changed without notice.



Standard



Option



## HULL

- 6 hull windows (3 each side)
- GRP hull, isophthalic gelcoat, colour: Signal White (RAL 9003), 1st layer vinyl ester resin with balsa sandwich core.
- Waterline and cove line, isophthalic gelcoat, colour: Dark Grey (RAL 7043)

## KEEL

- L-keel, cast iron, draft: 2.25 m
- GRP rudder with seawater resistant aluminium shaft and self-aligning bearings

## LAYOUT & INTERIOR

- A1: Master cabin with island double berth, storage space and a head with separate shower stall
- B1: Saloon with L-galley and dining area on stb, lounge area with chart table and head with separate shower on port
- C2: 2 aft cabins with double berth and storage space
- 3-burner gas stove with oven, waste bin, 12 V fridge approx. 130 l, double stainless steel sink with mixing tab
- Interior furniture in high quality marine plywood, Satin Varnish
- Hanse companionway closing system
- Saloon table, folding
- Worktop in galley - Black Quartz

## WOOD (FURNITURE, FLOORBOARD)

- Furniture - Mahogany Style, Satin Varnish
- Cupboards fronts in wood colour
- Floorboard - Acacia

## UPHOLSTERY, CARPETS & CURTAINS

- Mattresses for all berths
- Upholstery - Monte Carlo, colour: Cream

## DECK & OUTSIDE EQUIPMENT

- GRP deck with antislip surface, isophthalic gelcoat, colour: Signal White (RAL 9003), 1st layer vinyl ester resin with balsa sandwich core. 1 cockpit locker on port and stb, stern locker port and stb, stowage for running rigging at helm position, anchor locker at bow.
- Teak on cockpit benches
- Teak on bathing platform

- Twin wheel steering system with emergency tiller
- 2 stainless steel steering wheels with leather cover
- Cockpit table, stainless steel with folding teak tops
- Pulpit and pushpit, stainless steel
- Railing, incl. stanchions and stainless steel wire
- Covered halyards and control lines lead to cockpit helm position, organizers and jammers, 6 retractable mooring cleats, handrail on coach roof, bow anchor fitting with step
- 2 LEWMAR 45 ST EVO manual halyard winches
- Bathing platform, manual fold-out with swimming ladder
- Life raft storage
- Anchor and forestay fitting
- Self tacking jib system
- Mainsheet system
- 7 large and 6 small deck hatches - openable, anchor locker hatch, stowage on coach roof with acrylic glass hatch
- 4 deck coach roof windows - acrylic glass next to companionway

## RIG & SAILS

- Rig, anodized aluminium, deck stepped, with kicker, standing and running rigging and 2 reefs
- ELVSTRÖM Dacron sails - full battened, main and jib

## NAVIGATION & INSTRUMENTS

- Illuminated compass at each helm
- Navigation lights - LED

## PROPULSION

- Fuel tank, approx. 210 l
- Engine (Diesel, approx. 57 hp) - saildrive, 3-blade fix propeller

## EQUIPMENT

- 12 V and 230 V electric system with main panels and 230 V shore power and sockets
- AGM battery set, capacity: 1x 90 Ah + 1x 160 Ah AGM
- Country Version: EU / AUS
- Battery charger 50 A
- Manual toilet with sea water flush (B layout)
- Manual toilet with sea water flush (A layout)
- LPG gas system, stowage for 1 gas bottle

- Blackwater system (appr. 35 l) with deck extraction and seacock for head, electric and manual bilge pump
- Freshwater system with electric pump and 20 l hot water, heated by main engine
- Fresh water tank, appr. 450 l

#### **ACCESSORIES**

- Mast steps

#### **SHIPPING & TRANSPORT**

- CE - Certificate cat. A - 10
- Owners manual
- EC - Type Examination Certificate

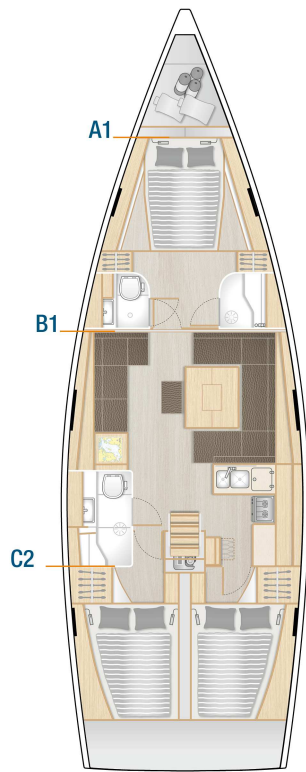
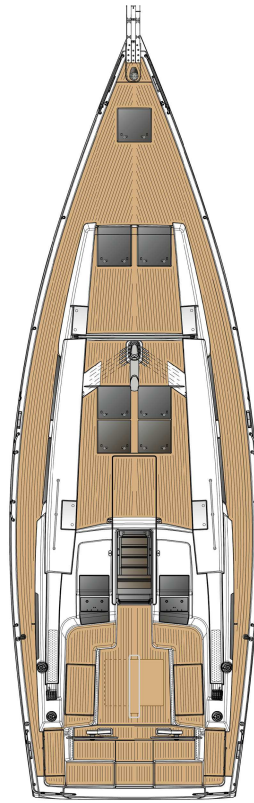
# SPECIFICATION



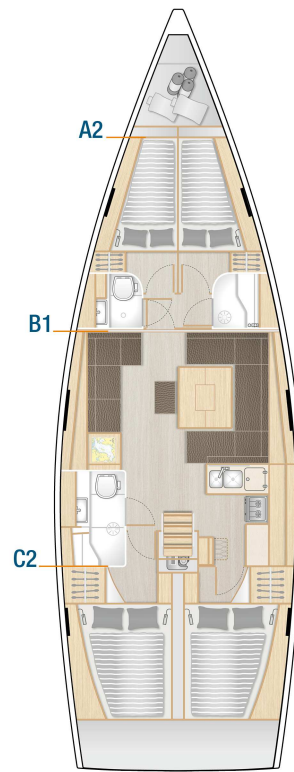
LOA		14.04 m	46' 1"
Hull length		13.55 m	44' 5"
LWL		12.20 m	40' 0"
Beam		4.38 m	14' 4"
Draft			
shallow keel		1.82 m	5' 12"
L-keel, medium		2.23 m	7' 4"
Displacement			
shallow keel	approx.	12.10 t	26,675 lbs
L-keel, medium		11.70 t	25,794 lbs
Engine Diesel			
standard	approx.	57.00 PS	57.00 hp
option	approx.	80.00 PS	80.00 hp
Fuel tank	approx.	210 l	55 gal
Fresh water	approx.	450 l	119 gal
CE Certificate		A-10	
Design		judel / vrolijk & co	
Interior		HanseYachts Design	
Mast length above WL	approx.	20.60 m	67' 7"
Total sail area	approx.	103.00 m <sup>2</sup>	1,109 sq ft
Main sail			
standard	approx.	60.00 m <sup>2</sup>	646 sq ft
furling	approx.	48.00 m <sup>2</sup>	517 sq ft
Self-tacking jib	approx.	43.00 m <sup>2</sup>	463 sq ft
Crossover	approx.	93.00 m <sup>2</sup>	1,001 sq ft
Gennaker	approx.	160.00 m <sup>2</sup>	1,722 sq ft

# 458

Model year 2019. Valid from 2018.07.01. All measurements/figures are approximate. Errors and omissions excepted. Specification and material can be changed without notice.



Standard



Option

## HULL

- 6 hull windows (3 each side)
- GRP hull, isophthalic gelcoat, colour: Signal White (RAL 9003), 1st layer vinyl ester resin with balsa sandwich core.
- Waterline and cove line, isophthalic gelcoat, colour: Dark Grey (RAL 7043)

## KEEL

- L-keel, cast iron, draft: 2.25 m
- GRP rudder with seawater resistant aluminium shaft and self-aligning bearings

## LAYOUT & INTERIOR

- A1: Master cabin with island double berth, storage space and a head with separate shower stall
- B1: Saloon with L-galley and dining area on stb, lounge area with chart table and head with separate shower on port
- C2: 2 aft cabins with double berth and storage space
- 3-burner gas stove with oven, waste bin, 12 V fridge approx. 130 l, double stainless steel sink with mixing tab
- Interior furniture in high quality marine plywood, Satin Varnish
- Hanse companionway closing system
- Saloon table, folding
- Worktop in galley - Black Quartz

## WOOD (FURNITURE, FLOORBOARD)

- Furniture - Mahogany Style, Satin Varnish
- Cupboards fronts in wood colour
- Floorboard - Acacia

## UPHOLSTERY, CARPETS & CURTAINS

- Mattresses for all berths
- Upholstery - Monte Carlo, colour: Cream

## DECK & OUTSIDE EQUIPMENT

- GRP deck with antislip surface, isophthalic gelcoat, colour: Signal White (RAL 9003), 1st layer vinyl ester resin with balsa sandwich core. 1 cockpit locker on port and stb, stern locker port and stb, stowage for running rigging at helm position, anchor locker at bow.
- Teak on cockpit benches
- Teak on bathing platform

- Twin wheel steering system with emergency tiller
- 2 stainless steel steering wheels with leather cover
- Cockpit table, stainless steel with folding teak tops
- Pulpit and pushpit, stainless steel
- Railing, incl. stanchions and stainless steel wire
- Covered halyards and control lines lead to cockpit helm position, organizers and jammers, 6 retractable mooring cleats, handrail on coach roof, bow anchor fitting with step
- 2 LEWMAR 45 ST EVO manual halyard winches
- Bathing platform, manual fold-out with swimming ladder
- Life raft storage
- Anchor and forestay fitting
- Self tacking jib system
- Mainsheet system
- 7 large and 6 small deck hatches - openable, anchor locker hatch, stowage on coach roof with acrylic glass hatch
- 4 deck coach roof windows - acrylic glass next to companionway

## RIG & SAILS

- Rig, anodized aluminium, deck stepped, with kicker, standing and running rigging and 2 reefs
- ELVSTRÖM Dacron sails - full battened, main and jib

## NAVIGATION & INSTRUMENTS

- Illuminated compass at each helm
- Navigation lights - LED

## PROPULSION

- Fuel tank, approx. 210 l
- Engine (Diesel, approx. 57 hp) - saildrive, 3-blade fix propeller

## EQUIPMENT

- 12 V and 230 V electric system with main panels and 230 V shore power and sockets
- AGM battery set, capacity: 1x 90 Ah + 1x 160 Ah AGM
- Country Version: EU / AUS
- Battery charger 50 A
- Manual toilet with sea water flush (B layout)
- Manual toilet with sea water flush (A layout)
- LPG gas system, stowage for 1 gas bottle

- Blackwater system (appr. 35 l) with deck extraction and seacock for head, electric and manual bilge pump
- Freshwater system with electric pump and 20 l hot water, heated by main engine
- Fresh water tank, appr. 450 l

#### ACCESSORIES

- Mast steps

#### SHIPPING & TRANSPORT

- CE - Certificate cat. A - 10
- Owners manual
- EC - Type Examination Certificate